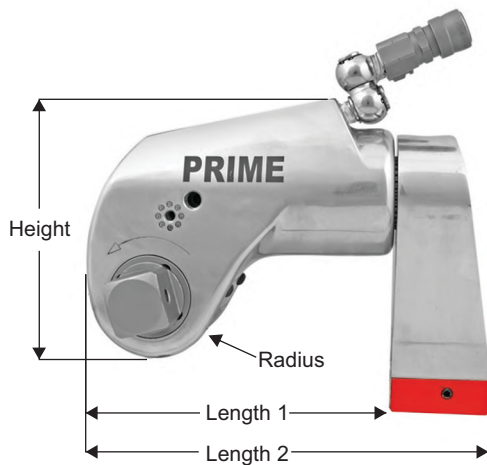




FEATURES :

- ▶ One Piece forming machined body made of Aluminium alloy, high strength, and design to exert torque on toughest application with minimum nose radius for trouble-free tool fit.
- ▶ Simple robust design with a minimum of moving parts
- ▶ Constant torque output provides accuracy of $\pm 3\%$ across full stroke.
- ▶ 100% Repeatability and Duty cycles.
- ▶ Anti Back Lash Mechanism provides hands free operation.
- ▶ Laser engraved Pressure VS Torque chart is fixed on tool for operator easy.
- ▶ Multi tooth gear drive segment ensures up to 27° torque stroke.
- ▶ Non Push Square Drive made up from strong marginal steel which enough to withstand max. Torque.
- ▶ Balanced piston rod assembly which gives load free piston movement.
- ▶ Direct Housing Reaction Allows use of tool without reaction arm.
- ▶ Replaceable Steel Reaction Boot to protect reaction main arm
- ▶ Long reaction arm allows for reaction on almost all applications.
- ▶ Arm retracts button easy to engage and disengagement of arm.
- ▶ 360°X 180° Swivel design provides free movement of hose in all applications.
- ▶ No Drip Quick connect couplers assure easy and safe operation and ensure an unblocked oil path.
- ▶ Multi tooth Ratchet made out of Strong marginal steel provides strength, accuracy and upto 32° torque stroke.
- ▶ One Piece Drive Plate made of Strong marginal steel provides longer life and increased durability.

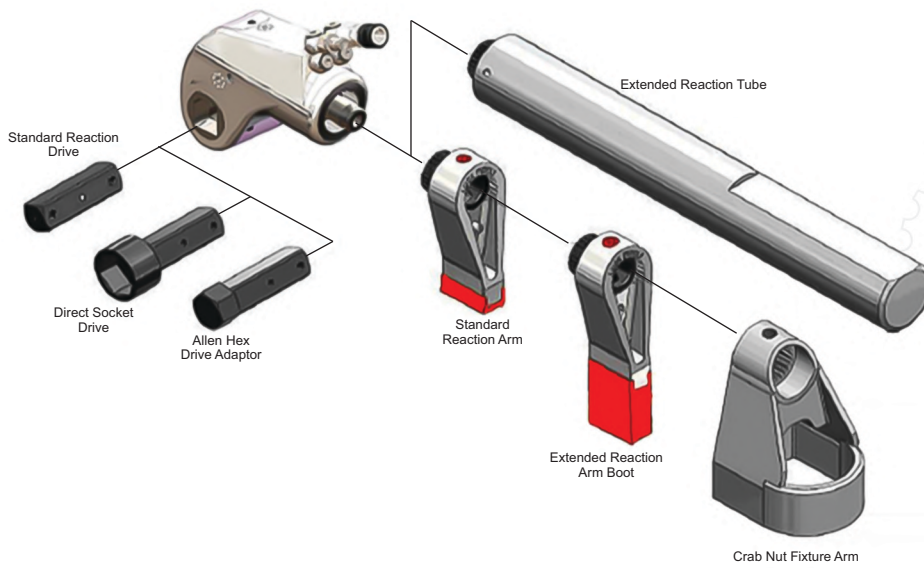


PHT SERIES

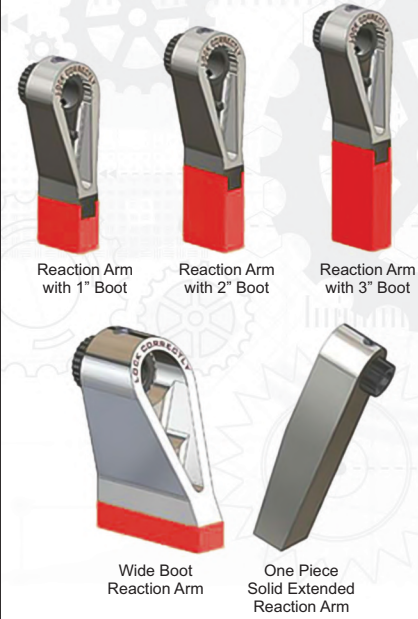
TECHNICAL SPECIFICATION

Model No.	PHT-0.75	PHT-1	PHT-2	PHT-3	PHT-6	PHT-7	PHT-11	PHT-15	PHT-20	PHT-27	PHT-35	PHT-60
Sq. Drive	3/4"	3/4"	3/4"	1"	1.1/2"	1.1/2"	1.1/2"	2.1/2"	2.1/2"	2.1/2"	2.1/2"	2.1/2"
Torque N.M (Min-Max)	99-1046	128-1243	168-1727	444-4539	770-7637	1006-10064	1500-14997	2013-20128	2634-28139	3700-37118	485-48600	7913-79129
Torque Lb. Ft (Min-Max)	77-770	91-914	127-1270	330-3330	565-5600	740-7400	1100-11000	1485-14845	1940-20625	2720-27200	3610-36100	5800-58000
Radius (mm)	19	20	25	33	41	45	50	59	58	63	77	79
Height (mm)	78	88	105	135	163	182	198	232	237	259	281	292
Length (L1)	92	94	121	153	194	208	227	295	274	294	370	367
(L2)	120	123	160	213	254	291	313	373	390	415	465	522
Width (W1)	40	42	51	67	82	92	100	100	124	134	152	167
(W2)	53	65	72	93	116	128	137	158	183	194	216	226
Weight (Kg.)	1.0	1.25	2.50	4.20	8.40	8.90	13.6	22.0	28.5	32.7	50.0	60.8

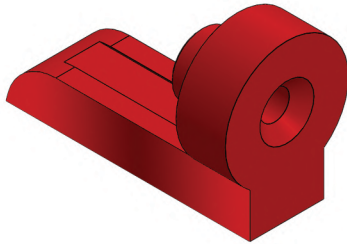
ACCESSORIES FOR PHT SERIES



TYPES OF REACTION ARMS



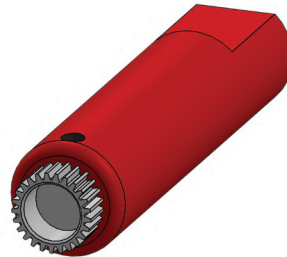
In Line Reaction Pad



TECHNICAL SPECIFICATION

Tool Model	Length mm	Height mm	Width mm	Ext. mm
PHT - 2	90.2	42.0	28.7	21.1
PHT - 3	114.3	54.6	38.6	27.7
PHT - 6	129.5	62.2	47.0	33.8
PHT - 7	158.5	73.7	52.1	42.0
PHT - 11	174.0	82.8	56.9	49.8
PHT - 15	220.0	98.0	78.8	60.0
PHT - 20	230.0	105.0	79.8	76.2
PHT - 27	224.8	110.0	58.4	70.0
PHT - 35	250.0	125.0	80.0	80.0
PHT - 60	269.7	140.0	101.6	90.0

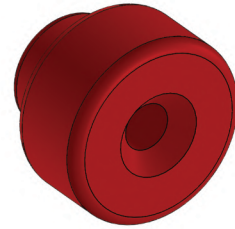
Extended Reaction Tube



TECHNICAL SPECIFICATION

Tool Model	Extended Reaction Tube Model	Dia. mm	Length mm
PHT - 2	ERT -2-03	50.8	471.7
PHT - 3	ERT-3-03	66.8	603.3
PHT - 6	ERT-6-03	76.2	571.5
PHT - 7	ERT-7-03	88.9	584.2
PHT - 11	ERT-11-03	95.3	637.5
PHT - 15	ERT -15-03	101.6	571.5
PHT - 20	ERT-20-03	101.6	550.0
PHT - 27	ERT-27-03	127.0	419.0
PHT - 35	ERT-35-03	140.0	390.0
PHT - 60	ERT-60-03	152.4	355.6

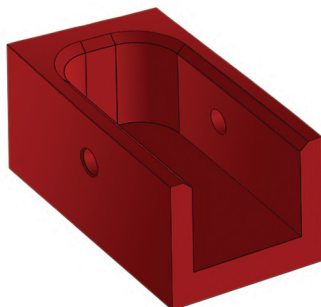
End Cap Protector



TECHNICAL SPECIFICATION

Tool Model	End Cap Protector Model
PHT - 0.75	PHT-0.75-EC
PHT - 1	PHT-1-EC
PHT - 2	PHT-2-EC
PHT - 3	PHT-3-EC
PHT - 6	PHT-5-EC
PHT - 7	PHT-7-EC
PHT - 11	PHT-11-EC
PHT - 15	PHT-15-EC
PHT - 20	PHT-20-EC
PHT - 27	PHT-27-EC
PHT - 35	PHT-35-EC
PHT - 60	PHT-60-EC

Extension Boot



TECHNICAL SPECIFICATION

Part No.	Ext.	Length	Width
PHT2-03-EXT1	25.4	38.6	25.4
PHT 2-03-EXT2	50.8		
PHT 2-03-EXT3	76.2		
PHT 3-03-EXT1	25.4	50.8	31.8
PHT 3-03-EXT2	50.8		
PHT 3-03-EXT3	76.2		
PHT 6-03-EXT1	25.4	69.6	50.8
PHT 6-03-EXT2	50.8		
PHT 6-03-EXT3	76.2		
PHT 7-03-EXT1	25.4	69.6	42.7
PHT 7-03-EXT2	50.8		
PHT 7-03-EXT3	76.2		
PHT 11-03-EXT1	25.4	76.2	50.8
PHT 11-03-EXT2	50.8		
PHT 11-03-EXT3	76.2		

Part No.	Ext.	Length	Width
PHT 15-03-EXT1	25.4	79.0	59.0
PHT 15-03-EXT2	50.8		
PHT 15-03-EXT3	76.2		
PHT 20-03-EXT1	25.4	105.9	63.5
PHT 20-03-EXT2	50.8		
PHT 20-03-EXT3	76.2		
PHT 27-03-EXT1	25.4	101.6	63.5
PHT 27-03-EXT2	50.8		
PHT 27-03-EXT3	76.2		
PHT 35-03-EXT1	25.4	115.0	76.0
PHT 35-03-EXT2	50.8		
PHT 35-03-EXT3	76.2		
PHT 60-03-EXT1	25.4	129.8	89.0
PHT 60-03-EXT2	50.8		
PHT 60-03-EXT3	76.2		